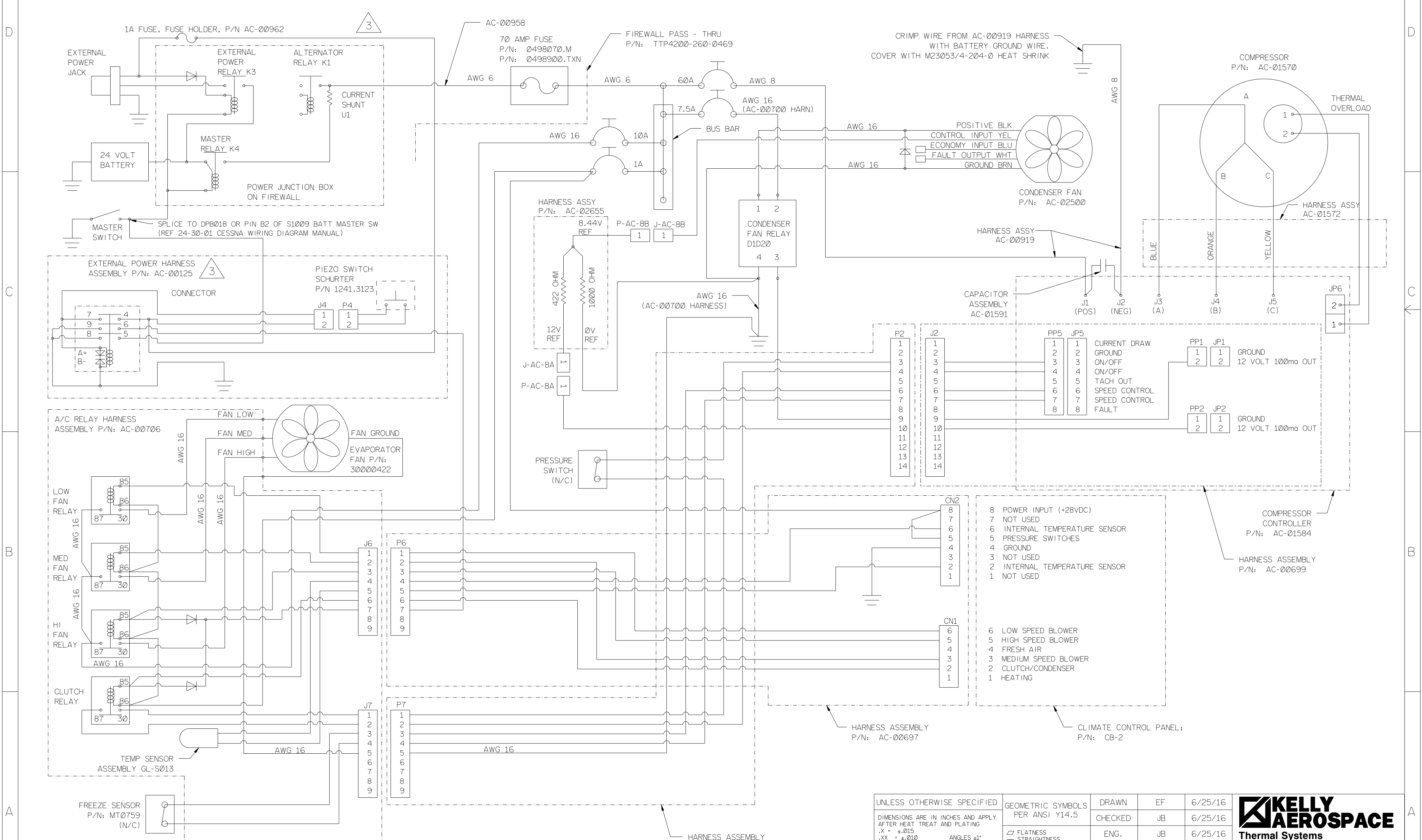


EN	REV	DESCRIPTION	BY	DATE
19-003	E	SEE ECN 19-003	PG	1/09/19
21-013	F	SEE ECN 21-013	EF	1/05/22
22-005	G	SEE ECN 22-005	EF	3/10/22
22-014	H	SEE ECN 22-014	EF	7/21/22



- NOTES:
1. WIRE GAGES SHOWN ARE MINIMUM WIRE SIZES.
 2. WIRES TO BE AWG 22 MINIMUM UNLESS OTHERWISE SPECIFIED.
 3. INSTALLATION OF EXTERNAL POWER HARNESS ASSEMBLY (AC-00125), 1A FUSE AND FUSE HOLDER (AC-00962) IS OPTIONAL.

UNLESS OTHERWISE SPECIFIED		GEOMETRIC SYMBOLS PER ANSI Y14.5	DRAWN	EF	6/25/16	 1625 Lost Nation Rd. Willoughby, OH 44094
DIMENSIONS ARE IN INCHES AND APPLY AFTER HEAT TREAT AND PLATING		▭ FLATNESS — STRAIGHTNESS ○ ROUNDNESS ⊙ CYLINDRICITY △ PROFILE ⊥ PERPENDICULARITY ⊕ POSITION ⊙ CONCENTRICITY = SYMMETRY ∠ ANGULARITY // PARALLELISM ↻ CIRCULAR RUNOUT ↻ TOTAL RUNOUT	CHECKED	JB	6/25/16	
.X = ±.015			ENG.	JB	6/25/16	
.XX = ±.010			FINISH	-	-	
.XXX = ±.005			WEIGHT	-	-	
BREAK ALL EDGES AND MACHINE ALL INSIDE CORNER FILLETS .015 MAX. SURFACE FINISH 125		MATERIAL		-	-	CESSNA 182 AC SCHEMATIC WITH CB-2 CONTROLLER
THIS DRAWING CONTAINS INFORMATION THAT IS CONFIDENTIAL AND PROPRIETARY TO KELLY AEROSPACE. THIS DRAWING IS FURNISHED ON THE UNDERSTANDING THAT THE DRAWING AND THE INFORMATION IT CONTAINS WILL NOT BE COPIED OR DISCLOSED TO OTHERS EXCEPT WITH THE WRITTEN CONSENT OF KELLY AEROSPACE. IT WILL NOT BE USED TO THE DETRIMENT OF KELLY AEROSPACE, AND WILL BE RETURNED UPON REQUEST BY KELLY AEROSPACE.		SIZE	SH 1	CODE ID	DRAWING NO.	
		C	OF 1	7FUQ0	AC-01291	
		SCALE = NTS			REV.	H