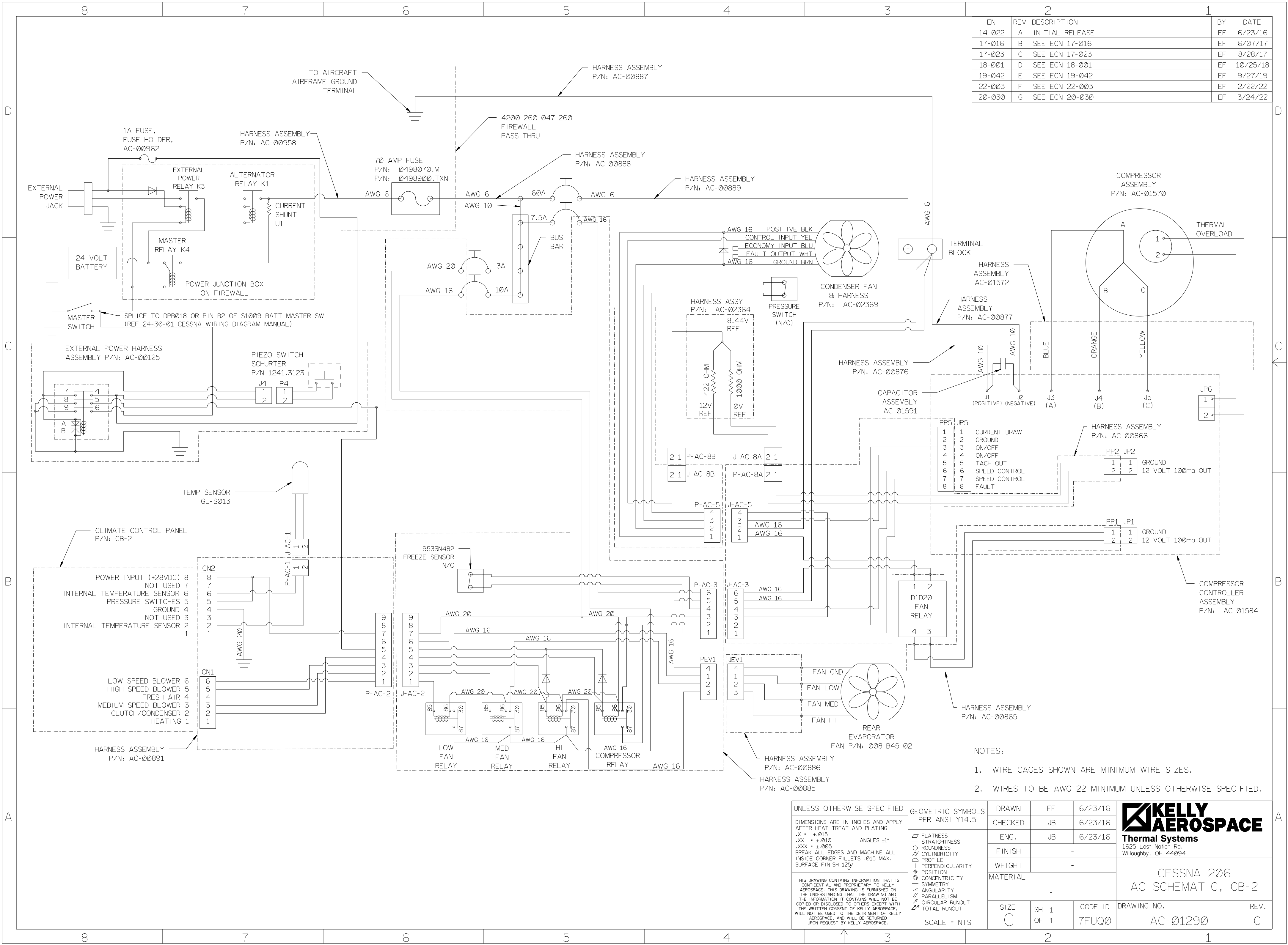


EN	REV	DESCRIPTION	BY	DATE
14-022	A	INITIAL RELEASE	EF	6/23/16
17-016	B	SEE ECN 17-016	EF	6/07/17
17-023	C	SEE ECN 17-023	EF	8/28/17
18-001	D	SEE ECN 18-001	EF	10/25/18
19-042	E	SEE ECN 19-042	EF	9/27/19
22-003	F	SEE ECN 22-003	EF	2/22/22
20-030	G	SEE ECN 20-030	EF	3/24/22



- NOTES:
1. WIRE GAGES SHOWN ARE MINIMUM WIRE SIZES.
  2. WIRES TO BE AWG 22 MINIMUM UNLESS OTHERWISE SPECIFIED.

UNLESS OTHERWISE SPECIFIED DIMENSIONS ARE IN INCHES AND APPLY AFTER HEAT TREAT AND PLATING .X ± .015 .XX ± .010 .XXX ± .005 BREAK ALL EDGES AND MACHINE ALL INSIDE CORNER FILLETS .015 MAX. SURFACE FINISH 125  THIS DRAWING CONTAINS INFORMATION THAT IS CONFIDENTIAL AND PROPRIETARY TO KELLY AEROSPACE. THIS DRAWING IS FURNISHED ON THE UNDERSTANDING THAT THE DRAWING AND THE INFORMATION IT CONTAINS WILL NOT BE COPIED OR DISCLOSED TO OTHERS EXCEPT WITH THE WRITTEN CONSENT OF KELLY AEROSPACE. WILL NOT BE USED TO THE DETRIMENT OF KELLY AEROSPACE, AND WILL BE RETURNED UPON REQUEST BY KELLY AEROSPACE.	GEOMETRIC SYMBOLS PER ANSI Y14.5	DRAWN	EF	6/23/16	 1625 Lost Nation Rd. Willoughby, OH 44094  CESSNA 206 AC SCHEMATIC, CB-2
	<ul style="list-style-type: none"> <li>— FLATNESS</li> <li>— STRAIGHTNESS</li> <li>○ ROUNDNESS</li> <li>⊘ CYLINDRICITY</li> <li>△ PROFILE</li> <li>⊥ PERPENDICULARITY</li> <li>⊕ POSITION</li> <li>⊙ CONCENTRICITY</li> <li>≡ SYMMETRY</li> <li>∠ ANGULARITY</li> <li>∥ PARALLELISM</li> <li>⊙ CIRCULAR RUNOUT</li> <li>⊙ TOTAL RUNOUT</li> </ul>	CHECKED	JB	6/23/16	
		ENG.	JB	6/23/16	
		FINISH	-		
		WEIGHT	-		
		MATERIAL	-		
	SCALE = NTS	SIZE	SH 1 OF 1	CODE ID 7FUQ0	DRAWING NO. AC-01290
					REV. G